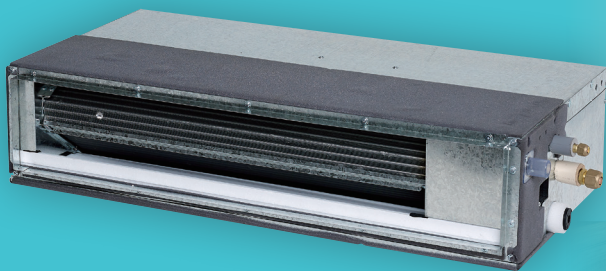




Perfecting the Air

- IDEAL FOR DISCREET INSTALLATION
- EASY MAINTENANCE BY AUTO CLEAN AIR FILTER UNIT (OPTIONAL)
- BUILT-IN DRAIN PUMP



HEATING AND COOLING SOLUTIONS

BULKHEAD SYSTEM

FDYBA Series



DUCT CONNECTION LOW STATIC PRESSURE TYPE

The new R32 Bulkhead range is the ideal choice for air conditioning areas where a discreet installation is preferred.

The indoor unit fits flush into the ceiling with only the suction air and discharge grilles visible inside your home and leaving maximum floor and wall space for furniture, decoration and fittings. The Bulkhead range is truly discreet with whisper quiet operations to ensure limited impact to internal room aesthetics and acoustics.



3.5kW
-TO-
8.0kW
RATED HEATING CAPACITIES

5
MODELS

REVERSE CYCLE



ALL CONTROLLERS ARE OPTIONAL & SEPARATELY SOLD



ULTRA COMPACT

With a height of 200 mm and a depth of 450 mm, new LSP duct is suitable for a variety of applications with limited installation space.



COMFORT

Switchable fan speed: 5 steps and Auto. (Auto fan speed applicable when wired remote controller is used)



HIGH EFFICIENCY

DC fan motor and built-in DC drain pump with high lift (750mm) also result improve energy efficiency.



FLEXIBLE RETURN AIR

Option of a rear or bottom suction return allows for greater installation flexibility.



3-D AUTO SWING GRILLE (OPTION)¹

Vertical & horizontal motorised louvres installed provide 3-D airflow distribution, circulating air to all corners of the room. Vertical & horizontal motorised louvres installed provide 3-D airflow distribution, circulating air to all corners of the room.



¹BDG20A09A1 for 25 Class, BDG20A15A1 for 35-50 Class & BDG20A20A1 for 60-71 Class. Only compatible with BRC1E63 controller.

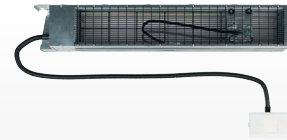
²BAE20A62 for 25 Class, BAE20A82 for 35-50 Class & BAE20A102 for 60-71 Class (all models extend depth by 188mm). Only compatible with BRC1E63 controller.

Note: R32 Bulkhead indoor units are not suitable for under floor installation. Please consult with your nearest Daikin specialist.



AUTO CLEAN AIR FILTER MODULE (OPTION)²

This module keeps the internal filter clean by collecting dust and storing it in a convenient vacuum port for easy removal.



SPECIFICATIONS

INDOOR UNIT			FDYBA25AV1	FDYBA35AV1	FDYBA50AV1	FDYBA60AV1	FDYBA71AV1	
OUTDOOR UNIT			RZAC25GV1	RZAC35GV1	RZAC50GV1	RZAC60GV1	RZAC71GV1	
Power Supply		Indoor / Outdoor	1 Phase, 220-240V, 50Hz					
Rated Capacity (Capacity Range)		Cool (kW)	2.5 (0.8-2.8)	3.5 (0.8-4.0)	5.0 (1.6-6.2)	6.0 (2.0-6.7)	7.1 (1.7-7.6)	
		Heat (kW)	3.5 (0.9-3.7)	4.0 (1.0-4.3)	6.0 (1.5-7.4)	7.0 (2.0-8.0)	8.0 (1.4-8.6)	
Power consumption		Cool (kW) / Heat (kW)	0.60 / 0.97	1.02 / 1.11	1.37 / 1.73	1.70 / 1.80	2.12 / 2.22	
E.E.R		Cool(kW)	4.17	3.45	3.65	3.53	3.35	
C.O.P		Heat (kW)	3.61	3.60	3.47	3.89	3.60	
AEER*		Cool (kW)	4.04	3.38	3.52	3.43	3.32	
ACOP*		Heat (kW)	3.54	3.54	3.37	3.78	3.57	
TCSPF* (Cooling) Commercial / Residential		Hot	5.22 / 4.85	4.71 / 4.39	5.64 / 5.10	5.77 / 5.22	4.97 / 4.62	
		Average	5.07 / 4.20	4.70 / 3.94	5.56 / 4.22	5.78 / 4.41	5.07 / 4.29	
		Cold	5.29 / 4.15	4.96 / 3.99	5.88 / 4.23	6.16 / 4.48	5.42 / 4.46	
HSPF* (Heating) Commercial / Residential		Hot	4.29 / 4.29	4.53 / 4.53	4.78 / 4.76	5.30 / 5.28	6.14 / 6.09	
		Average	3.76 / 3.64	4.25 / 4.06	4.39 / 4.12	4.88 / 4.58	4.96 / 4.13	
		Cold	3.30 / 3.05	3.92 / 3.69	3.92 / 3.68	4.34 / 3.98	3.83 / 3.28	
Indoor Unit	Fan	Airflow rate (H/HM/ML/L)	150/133/116/100/85	195/182/152/123/95	240/220/191/162/132	325/275/226/182/135		
		External static pressure	9.0/8.0/7.0/6.0/5.1	11.7/10.9/9.1/7.4/5.7	14.4/13.2/11.5/9.7/7.9	19.5/16.5/13.6/10.9/8.1		
	Sound pressure level ⁵ (H / L)	Discharge	Rated 30 (10-50)		Rated 30 (10-45)		Rated 30 (10-40)	
		Suction	41.6 / 28.0	43.1 / 26.2	45.3 / 31.0	47.7 / 27.2	47.7 / 27.2	
		Casing breakout	40.8 / 27.4	38.9 / 20.6	41.2 / 25.4	46.2 / 26.9	46.2 / 26.9	
	Sound power level ⁵ (H / L)	Discharge	30.1 / 19.6	31.6 / 18.6	33.8 / 23.4	35.6 / 20.2	35.6 / 20.2	
		Suction	56.1 / 42.5	57.6 / 40.7	59.8 / 45.5	62.2 / 41.7	62.2 / 41.7	
		Casing breakout	55.3 / 41.9	53.5 / 35.1	55.7 / 39.9	60.7 / 41.4	60.7 / 41.4	
	Air filter ⁶		Mould-proof air filter (Removable / Washable)					
	Dimensions (HxWxD)		200x700x450	200x900x450		200x1,100x450		
Machine weight		18	21		24			
Certified operation range	Cool (°CWB) / Heat (°CDB)	14 to 25 / 15 to 30						
Colour		Ivory White						
Outdoor Unit	Compressor	Type	Hermetically sealed swing type					
		Motor output (kW)	0.80		1.30			
	Refrigerant charge (R-32)	kg	0.73		1.35		1.50	
		(Charged for 10m)			(Charged for 30m)		(Charged for 10m)	
	Sound pressure level ⁷	Cool (dBA) / Heat (dBA)	45 / 48	47 / 48	47 / 50	48 / 51	53 / 55	
		Night quiet mode (dBA)	(Reduced from rated sound pressure level)					
	Sound power level	dBA	60		62	63	67	
	Dimensions (HxWxD)	mm	550x675x284		595x845x300		695x930x350	
Machine weight	kg	28		45		54		
Certified Operation Range	Cool (°CDB) / Heat (°CWB)	-10 to 50 / -15 to 18						
Piping connections - Drain	Liquid (Flare)			Ø 6.4				
	Gas (Flare)	Ø 9.5				Ø 12.7		
	Indoor unit (mm)	PVC26 (I.D Ø20 x O.D Ø26)						
	Outdoor unit (mm)	Ø 16.0 (Hole)						
Max. interunit piping length	m	20 (Equivalent length 30)		30 (Equivalent length 45)				
Max. installation level difference	m	15		20				
Heat insulation		Both liquid and gas piping						

Notes:

¹ Rated cooling capacities are based on the following conditions: Indoor temp., 27°CDB, 19°CWB; outdoor temp. 35°CDB, 24°CWB. Equiv. refrigeration piping, 7.5 m (horizontal)

² Rated heating capacities are based on the following conditions: Indoor temp., 20°CDB, 15°CWB; outdoor temp., 7°CDB, 6°CWB. Equiv. refrigeration piping, 7.5 m (horizontal)

³ Capacities are net, including a deduction for cooling (an addition for heating) for indoor fan motor heat.

⁴ External static pressure is changeable by remote controller.

⁵ The indoor sound levels are determined in accordance with ISO 3745:2012. Values indicated are determined at 1.5m to rated condition, at rated static pressure.

⁶ Air filter is a standard accessory, supplied with the unit.

⁷ The operation sound is measured in anechoic chamber. If it is measured under the actual installation conditions, it is normally over the set value due to environmental noise and sound reflection.

* Values based on Energy Efficiency (Energy Using Products) Amendment Regulations 2020.

TCSPF: Total Cooling Seasonal Performance Factor / HSPF: Heating Seasonal Performance Factor

In simple terms, TCSPF & HSPF represents the ratio of the Total Cooling & Heating capacity of the air-conditioner relative to the Total energy consumed by the air-conditioner during the Total Cooling & Heating operation periods in a year. Whereas the previous index of AEER & ACOP was calculated using only one representative outdoor temperature (35° for cooling and 7° for heating), the new index of TCSPF & HSPF uses a broader range of annual outdoor temperatures* as stipulated in AS/NZS 3823.4.1:2014 Further, the annual outdoor temperatures are based on zoning Australia/ New Zealand into three distinct climate zones (Hot/Average/Cold). This allows you to determine the performance efficiency of different air-conditioners by comparing their TCSPF & HSPF within the same climate zone.

* Residential & Commercial TCSPF/HSPF are calculated based on different annual outdoor temperatures.

The specifications, designs & information in this flyer are subject to change without notice.

Your Local Daikin Specialist Dealer:



daikin.co.nz